



**PHILIPS**

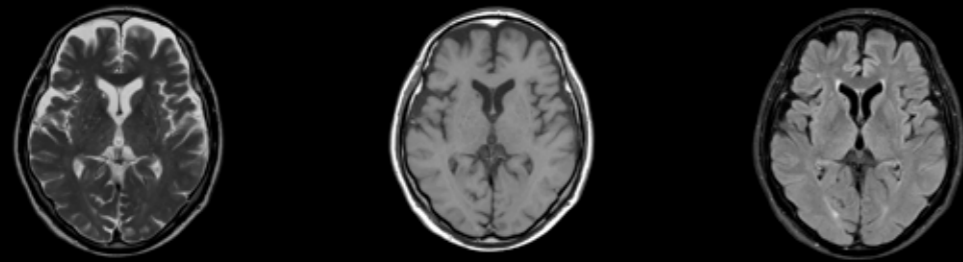
Compressed SENSE

MR Clinical application

## Speed done right **Every time**

To meet the increased demand for productivity, a technology break-through in acceleration is required. Leveraging our long standing leadership position in speed (i.e. SENSE), Philips brings a breakthrough in productivity. Compressed SENSE is about accelerating full patient examinations and thus guaranteeing the next level in productivity and image quality to empower your staff to focus where it matters the most, enhanced patient care. This new paradigm in productivity is available for all anatomical contrasts and all anatomies, and not only 3D scans but also 2D scans are significantly faster (up to 50%).

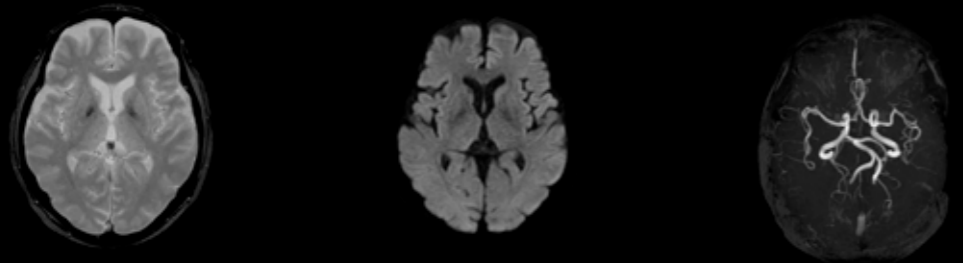
# Complete brain exams nearly 2x faster with virtually equal image quality<sup>1</sup>



**2D T2w TSE**  
0.6 x 0.7 x 5.0 mm  
2:04 min

**2D T1w SE**  
0.9 x 1.3 x 5.0 mm  
2:35 min

**2D T2w FLAIR**  
1.0 x 1.2 x 5.0 mm  
2:12 min

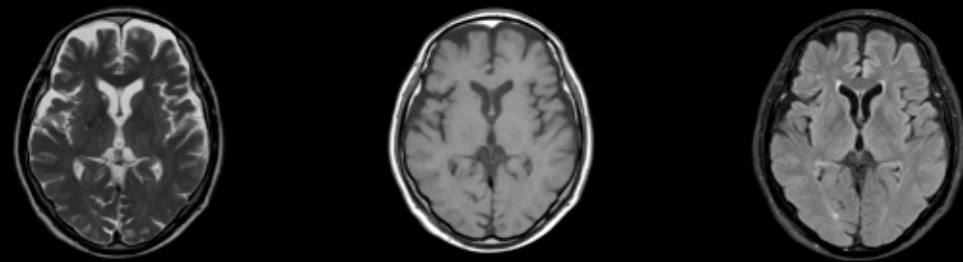


**2D T2w FFE**  
0.9 x 1.1 x 5.0 mm  
1:15 min

**2D DWI (b1000)**  
1.8 x 1.4 x 5.0 mm  
0:45 min

**3D Inflow**  
0.7 x 1.3 x 1.4 mm  
7:11 min

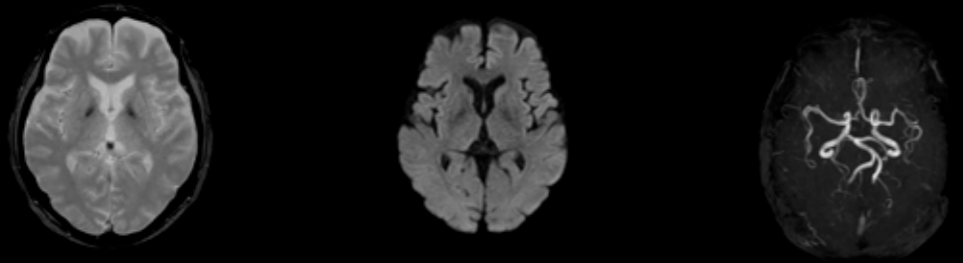
**Total Exam time**  
**17:02 min**  
(without Compressed SENSE)



**2D T2w TSE**  
0.6 x 0.7 x 5.0 mm  
C-SENSE 3.2, 1:04 min

**2D T1w SE**  
0.9 x 1.3 x 5.0 mm  
C-SENSE 2.8, 1:09 min

**2D T2w FLAIR**  
1.0 x 1.2 x 5.0 mm  
C-SENSE 2.5, 1:30 min



**2D T2w FFE**  
0.9 x 1.1 x 5.0 mm  
C-SENSE 3.0, 0:49 min

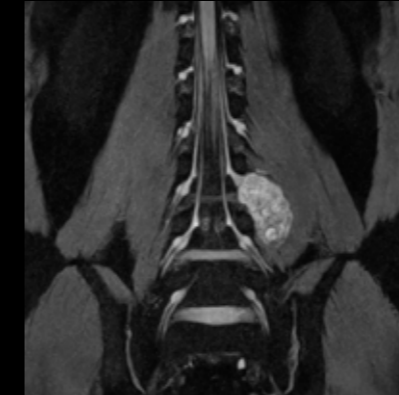
**2D DWI (b1000)**  
1.8 x 1.4 x 5.0 mm  
0:45 min

**3D Inflow**  
0.7 x 1.3 x 1.4 mm  
C-SENSE 4.5, 3:06 min

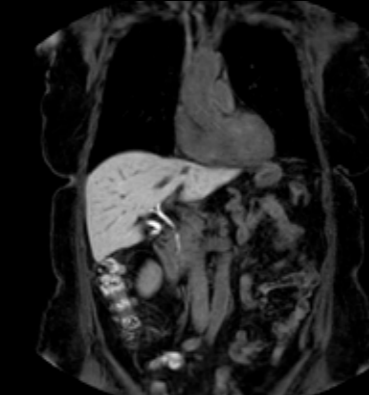
**Total Exam time**  
**10:28 min**  
(with Compressed SENSE)

Courtesy: Kumamoto Chuo Hospital, Japan, Ingenia 3.0T  
1 Compared to scans without Compressed SENSE

# Faster 2D and 3D scans with virtually equal image quality<sup>1</sup>



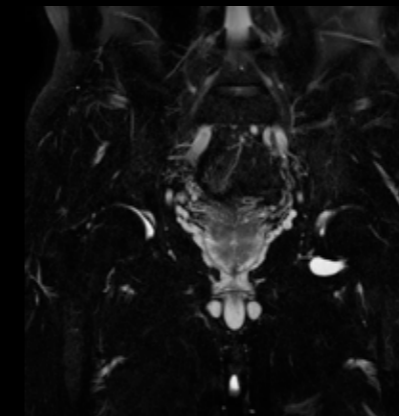
**3D Neurography**  
1.0 x 1.0 x 6.0 mm  
C-SENSE 3.0, 2:53 min



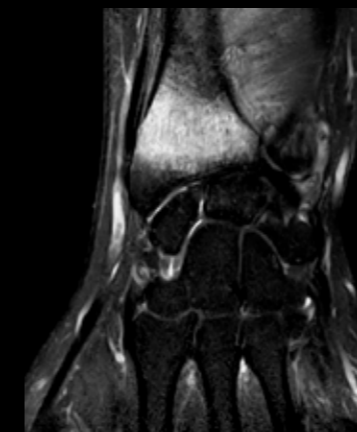
**3D T1w mDIXON XD FFE**  
2.0 x 2.0 x 4.0 mm  
C-SENSE 8.0, 8.7 sec



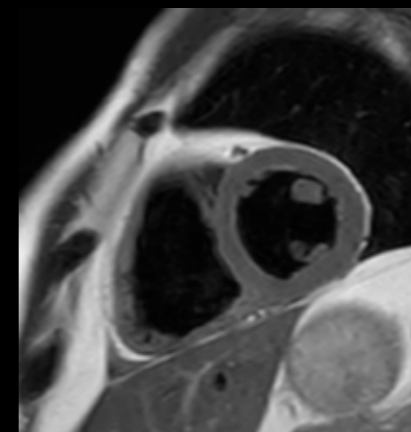
**2D T1w TSE**  
0.7 x 0.9 x 3.0 mm  
C-SENSE 1.6, 1:37 min



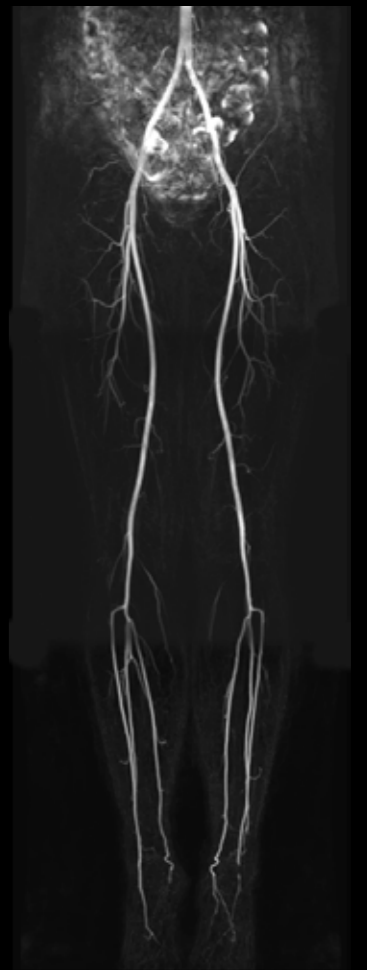
**2D T2w mDIXON XD TSE - Hips (Water Only and In Phase)**  
0.8 x 1.0 x 5.0 mm  
C-SENSE 2.0, 2:39 min



**2D PDw SPAIR**  
0.4 x 0.5 x 2.5 mm  
C-SENSE 1.5, 2:57 min



**2D Black Blood imaging**  
1.4 x 1.7 x 8.0 mm  
C-SENSE 2.3, 10 sec



**Non-CE 3D TRANCE**  
1.4 x 1.4 x 4.0 mm  
C-SENSE 7.0, 1:14 min /stack

Courtesy: Kurashiki Central Hospital, Okayama, Japan, Ingenia 1.5T (neurography, hips) | University Hospital Geneva, Switzerland, Ingenia 1.5T (abdomen, wrist) | Mahajan imaging, Gurgaon, India, Ingenia 3.0T (spine) | Ingenia 1.5T (cardiac, vascular run-off)  
1 Compared to scans without Compressed SENSE

# Compressed SENSE

Field strength	1.5T, 3.0T.
Applications	Available for all anatomies (Brain, Spine, HeadNeck, MSK, Body, Breast, Prostate, Cardiac, Vascular)
Sequence	Available for multiple cartesian scan techniques like FFE, SE, TFE and TSE
Image contrast	Available for all anatomical contrasts (e.g. T1, T2, PD, FLAIR, DIR, fat sat)
Speed	A break-through acceleration technique speeding up not only sequences but your entire exam
Image quality	Unique implementation enabling 2D and 3D scans to be up to 50% faster with virtually equivalent image quality <sup>1</sup> .

<sup>1</sup> Compared to scans without Compressed SENSE

© 2017 Koninklijke Philips N.V. All rights reserved.  
Specifications are subject to change without notice.  
Trademarks are the property of Koninklijke Philips N.V.  
or their respective owners.



[www.philips.com/mrclinicalapplications](http://www.philips.com/mrclinicalapplications)

4522 991 31361 \* FEB 2019